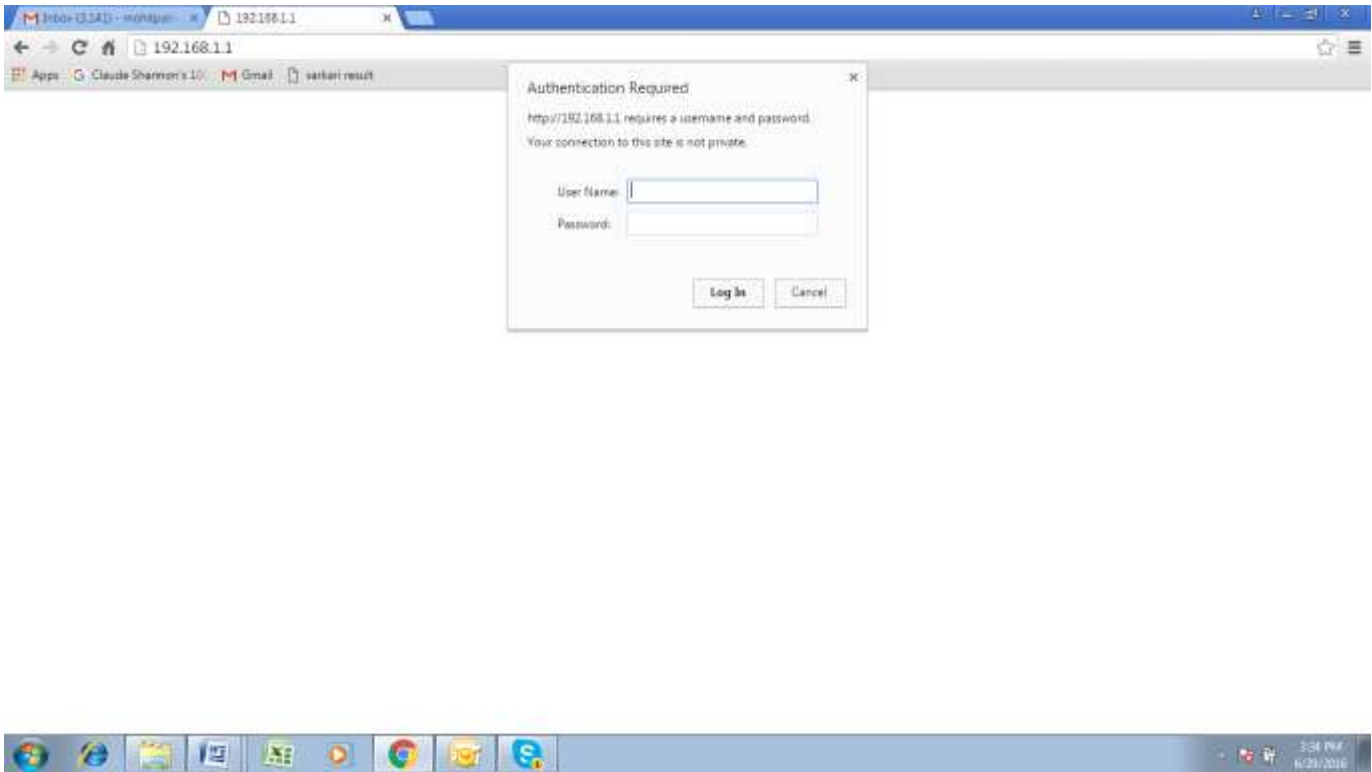
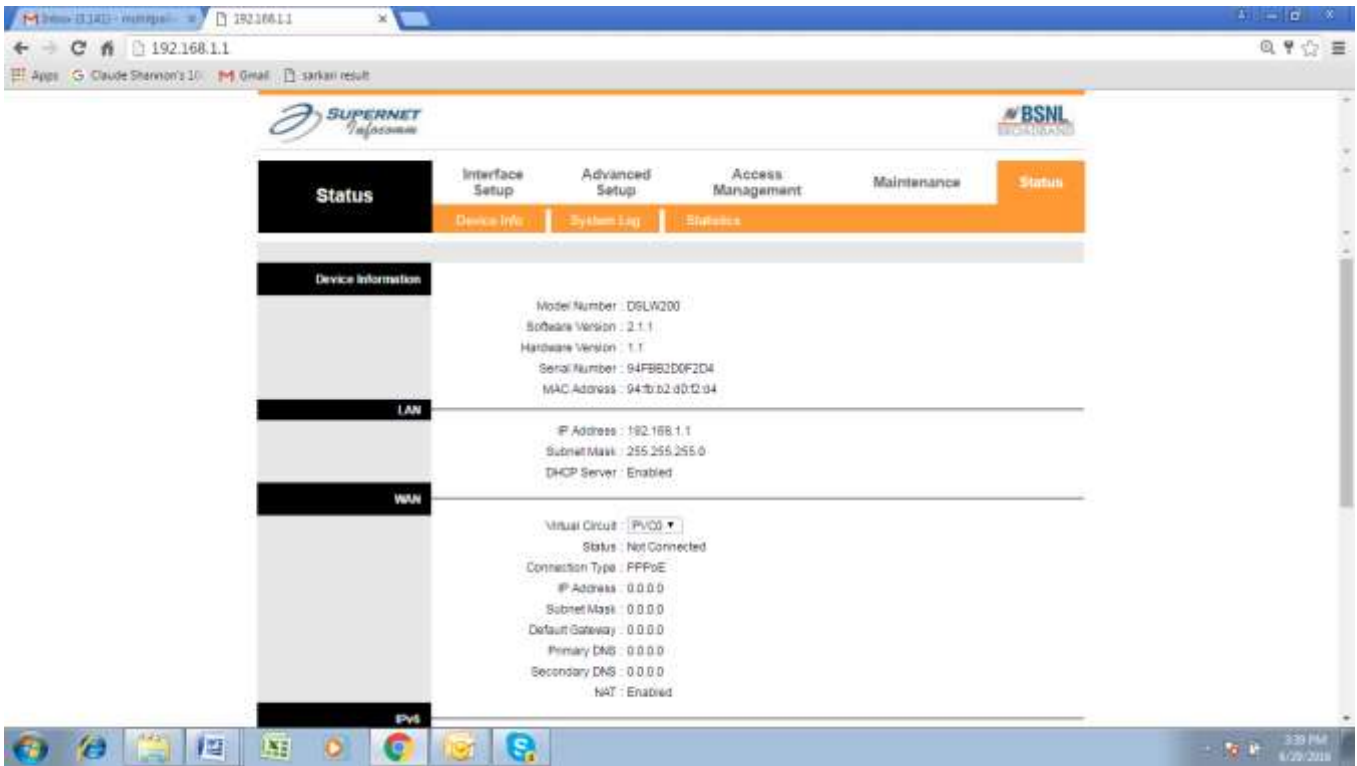


## The Standard Operation Procedure of Upgrade

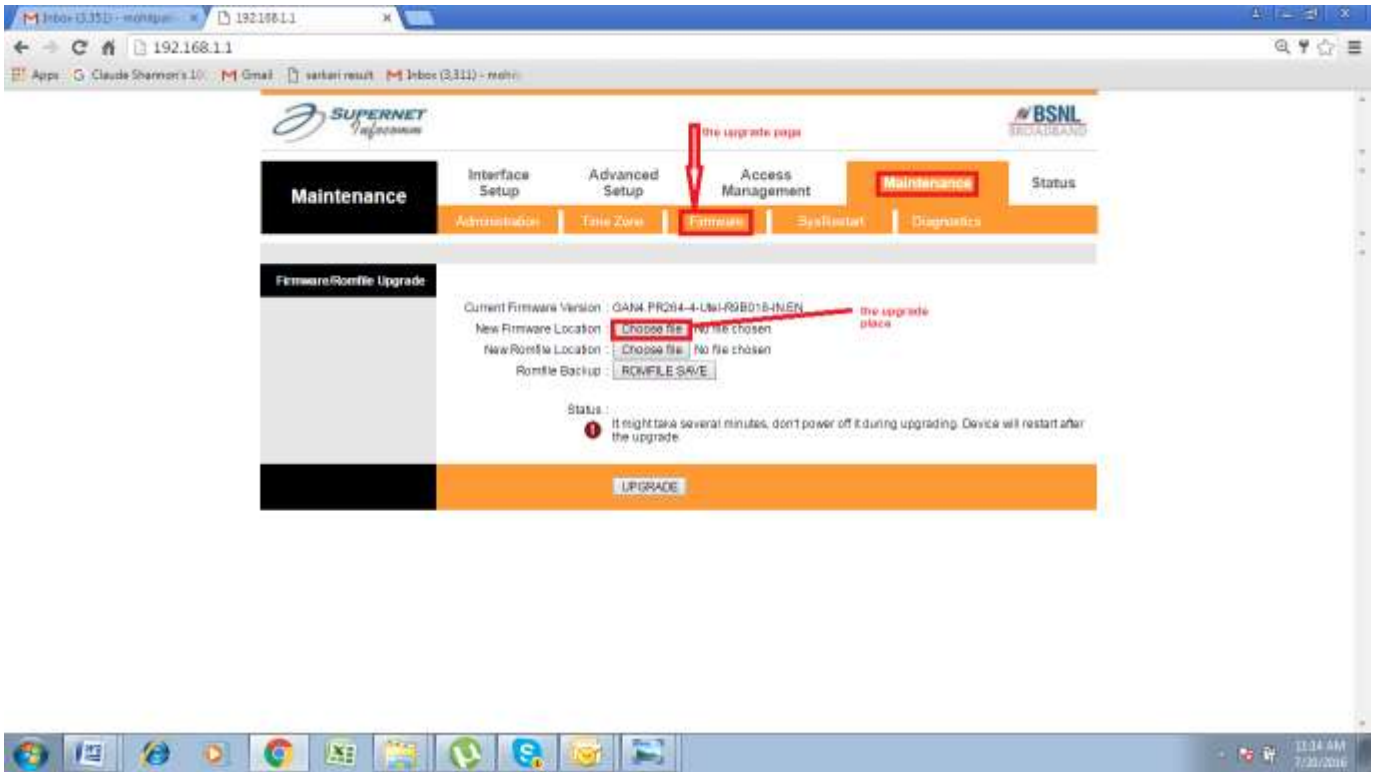
First, import 192.168.1.1 to enter the login page, as shown below.



Second, in the above page, please enter the username and password as admin/admin, and then click the “ok” button to enter the page as the following shows.

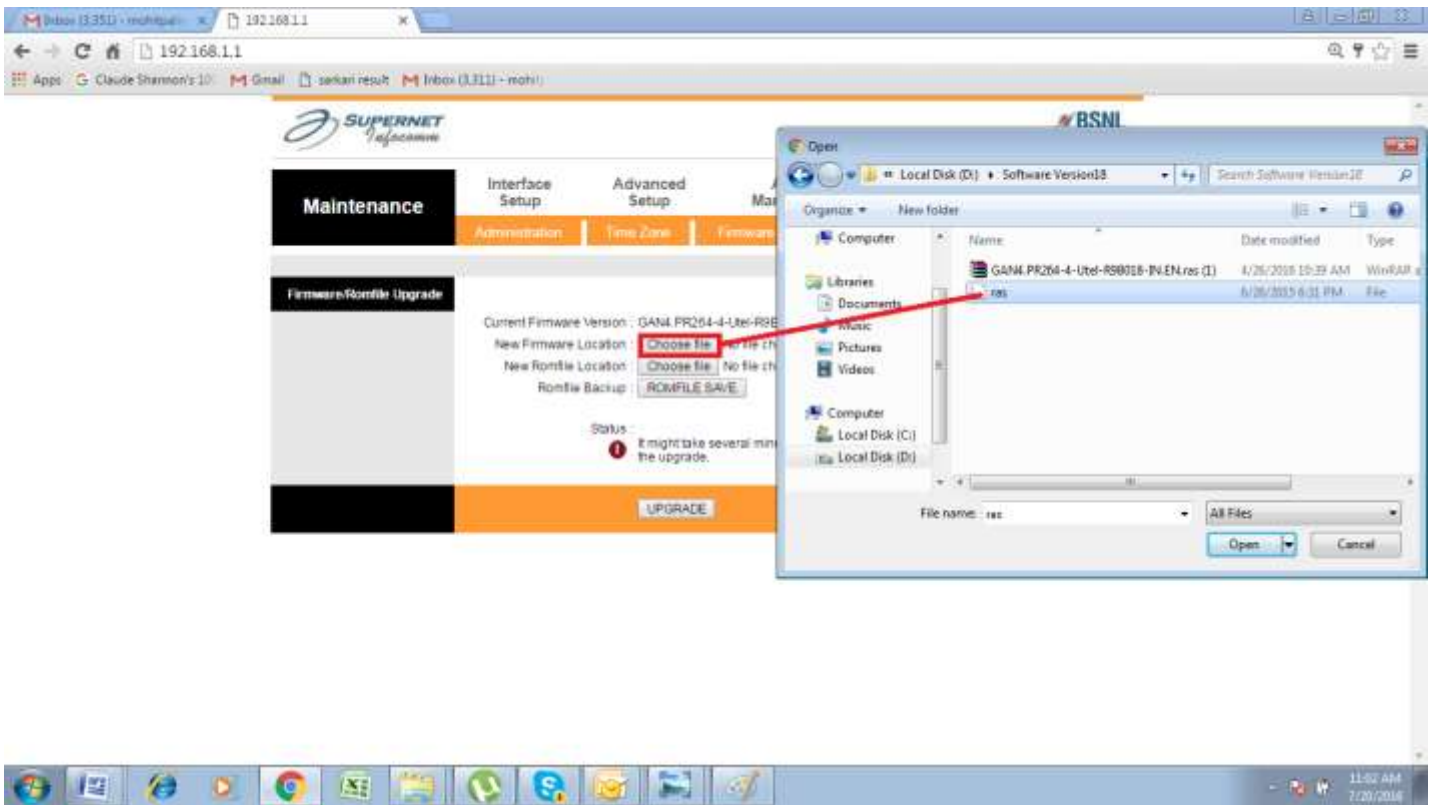


The 3th, click the “Maintenance” menu, then click the “Firmware” under its sub menu, which looks like the following



The 4th, In the above chart, click the “browse” button, then open the path that contains the upgrade file, as shown in the below.

**Note: the upgrade file name is ras, and can't be modified. Otherwise, the upgrade will be error.**



Finally, click the “UPGRADE” button to upgrade. Then the following pages will be shown. When the second chart as below shows 100%, it indicates that the upgrade success.

**Note:** In the upgrade progress, the device can't be powered off. Otherwise, it may cause the device not start up.



- Maintenance
  - Interface Setup
  - Advanced Setup
  - Access Management
  - Maintenance
  - Status
- Administration | Time Zone | Firmware | SysReboot | Diagnostics

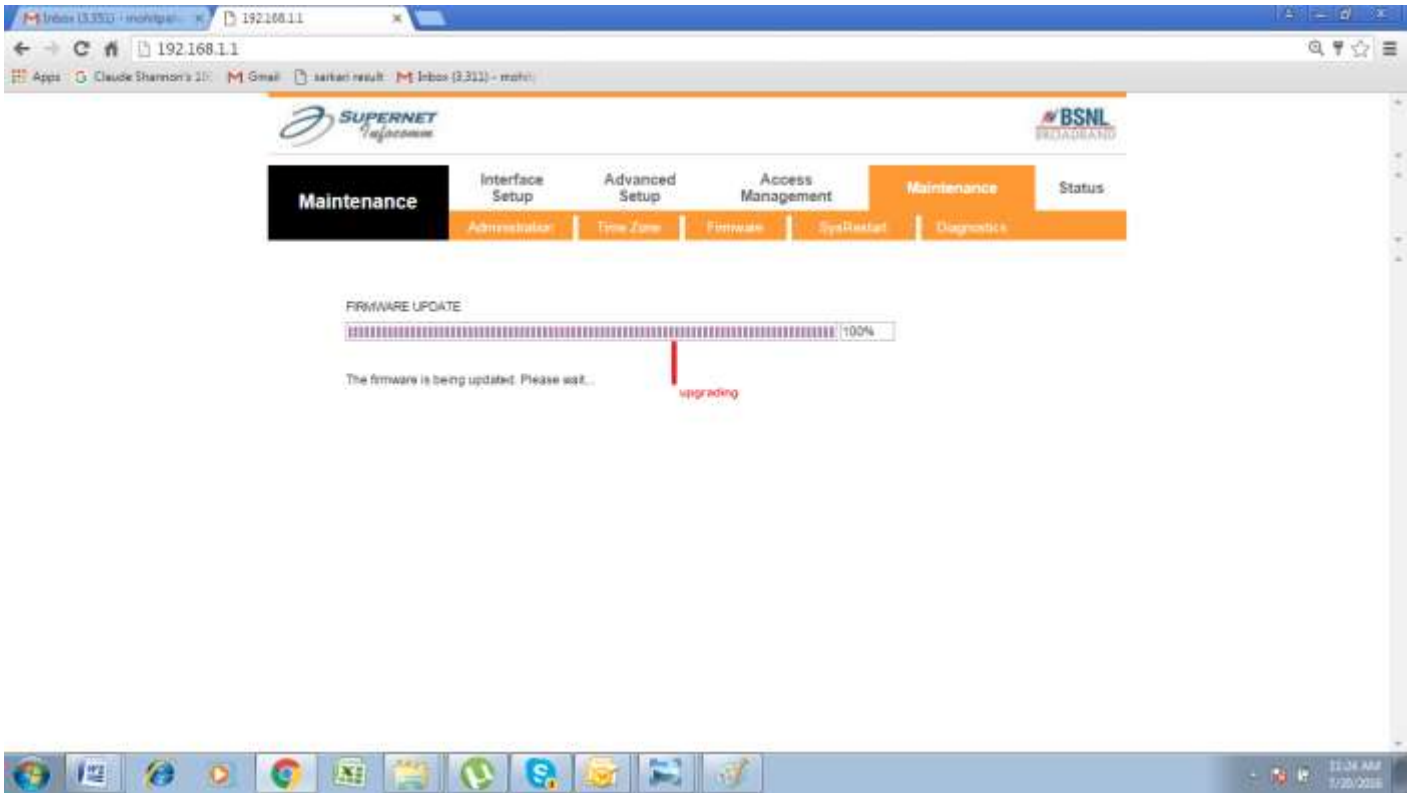
### Firmware/Romfile Upgrade

Current Firmware Version : GAN4-PR254-4-Ltd-R08018-IN-EN  
New Firmware Location :  ras  
New Romfile Location :  No file chosen  
Romfile Backup :

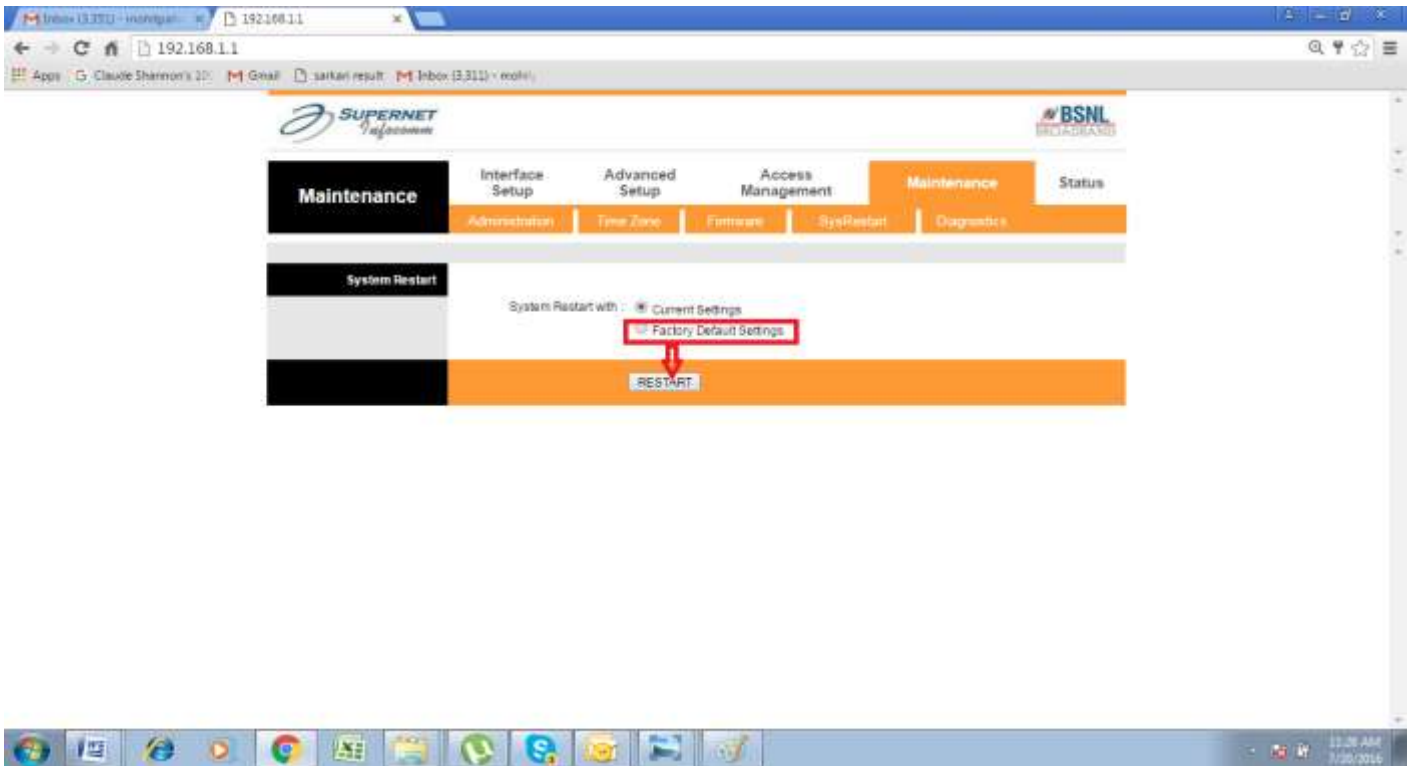
Status : Upgrade in progress. Please wait.  
It might take several minutes, don't power off it during upgrading. Device will restart after the upgrade.

**UPGRADE**

click it to upgrade



After FW upgrade successfully, reset to factory default settings as below:



Note - for see the version of firmware through following command to be use.

Type the command directly on browser 192.168.1.1/test\_version.htm

The screenshot shows a web browser window with the address bar displaying "192.168.1.1/test\_version.htm". The page content includes a form with the following fields:

- version: GAN4.PR264-4-Utel-R9B019-IN.EN
- build date: Apr 28 2016 11:07:03
- ResetFlag: 0
- command: input command
- result: (empty)

A "submit" button is located to the right of the result field. Below the form, a table lists the flash memory components:

Name	ID	Size
Winbond W25X32	0xef3016	4Mbytes
Winbond W25X16	0xef3015	2Mbytes
Winbond W25Q16	0xef4015	2Mbytes
Winbond W25Q32	0xef4016	4Mbytes
SST 25VF016B	0xbf2541	2Mbytes
SST 25VF032B	0xbf254a	4Mbytes
SST 26VF016	0xbf2601	2Mbytes
SST 26VF032	0xbf2602	4Mbytes
MX25L1606E(05D)	0xc22015	2Mbytes
MX25L3205D(06E)	0xc22016	4Mbytes
MX25L1635D	0xc22415	2Mbytes
MX25L3235D	0xc22416	4Mbytes
F25L016A	0x8c2015	2Mbytes
AT26DF161	0x1f4600	2Mbytes
EN25D16	0x1c3015	2Mbytes
EN25F16	0x1c3115	2Mbytes

# THANKS